

## Emergency LED Driver

### G2 EMUFO-40170-YY



ETL CLASSIFIED



Intertek



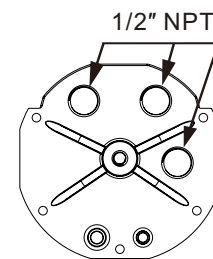
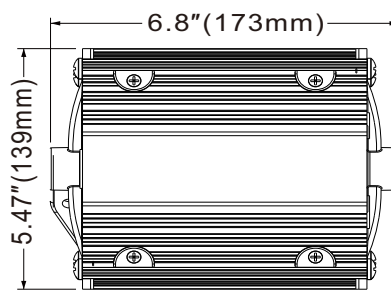
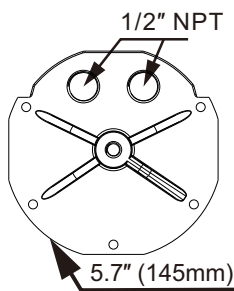
### Product Description:

This is a 40W AC emergency driver featuring the circular shape design. It operates from 100-347VAC and offers the constant voltage and constant current output models. It is able to work for -40°C ~+85°C case temperature under free air convection. It is equipped with various function options, such as dimming methodologies, so as to provide the optimal design flexibility for LED lighting system.

### Features

1. UL Listed for US and CANADA
2. Listed to UL924 and tested to CSA C22.2 NO.141 Field or factory installation
3. High output voltage
4. Low energy consumption CEC Title20 compliance
5. Constant output power
6. Self-testing
7. Battery: over temperature protection
8. Built-in Integrated junction box
9. For wiring to the LED driver's input

### Dimensions



### Specifications

Input voltage	100~347Vac.50/60Hz	Input Current	200mA max.	Input Power	12W max.
Output Voltage	170Vdc	Emergency Power	40W	Recharge Time	24Hrs
Discharge Time	1.5H	Warranty	5 Years	Battery	Li-ion
Ambient Temp	32~122°F(0~50°C)	Weight	3.96lbs(1.8kg)	Surge Protection	Line-Neutral 3KV

## Installation Manual

**!!! IMPORTANT SAFEGUARDS !!!****WHEN USING ELECTRICAL EQUIPMENT, BASIC SAFETY PRECAUTION SHOULD ALWAYS BE FOLLOWED, INCLUDING THE FOLLOWING**

### Read and follow all safety instruction

1. **CAUTION**-This emergency driver provides more than one power supply output source. To reduce the risk of electrical shock, disconnect both normal and emergency source by turning off the A.C. branch circuit.
2. **CAUTION**- Servicing of this equipment should be performed by qualified personnel only.
3. **CAUTION**- Do not attempt to service the battery. A sealed, no-maintenance battery is used that is not field replaceable. Replace the entire unit when necessary.
4. **CAUTION**- The use of accessory equipment not recommended by the manufacturer may cause an unsafe condition, void warranty, and result in non-compliance with UL specifications.
5. **CAUTION**- The emergency driver requires a UN-switched AC power source of 100-347VAC, 50/60Hz. Installer must confirm that fixtures input voltage. covered 120VAC before installation. It will supply power under an output voltage of 170VDC in emergency mode for at least 90 minutes.
6. **CAUTION**- Battery pack should be charged for 24 hours every 6 months during storage.
7. Battery in this unit may not be fully charged. After electricity is connected to the unit for at least 24 hours, then normal operation of this unit should take effect.
8. For use in 0°C minimum, 50°C maximum ambient temperatures. Suitable for use in damp locations and plenum spaces.
9. Flexible mental conduit is optional, depend on installation environment.
10. The emergency driver should be mounted in locations and at heights where it will not readily be subjected to tampering by unauthorized personnel.
11. Do not use this equipment for anything other than its intended use. Equipment only use for LED lighting emergency backup.
12. Do not mount near gas or electric heaters. Do not let power supply cords touch hot surfaces.
13. Do not make or leave any other open holes in the wiring enclosure or electrical component enclosure during installation.
14. This fixture is for use with grounded, UL Listed, this model can use in wet location. Not for use in heated air outlets or hazardous locations.
15. The emergency driver have battery inside, forbidden for insulation voltage (I/P-O/P) test.
16. Equipment should be mounted in locations and at heights where it will not be subjected to tampering by unauthorized personnel.
17. The equipment is intended for ordinary locations and for permanent installation into one or more listed emergency luminaires.
18. Do not use outdoor.

### Lumen output during emergency operation

The luminaire rated data and maximum mounting height can be found as follows:

1. Determine the fixture efficacy under normal AC operation, based on fixture manufacturer published data in lumens per watt(LM/W).
2. Reference DLC QPL ( [www.designlights.org](http://www.designlights.org) ) and Energy Star QPL ( [www.energystar.gov](http://www.energystar.gov) ) for rated data on fixture efficacy. If the fixture is not found on DLC or Energy Star Qualified Product List, contact fixture manufacturer.
3. Multiply fixture LM/W by rated output power of emergency pack Example 'model' is 25W x 100LM/W = 2500 Lumens.

**Caution: Before installation, Make certain the A.C. Power is off!**

#### STEP1: ASSEMBLING NOTICE

- > Select a suitable location on the hangable device.
- > The Maximum weight of lighting fixture should be less than 20kg.
- > Turn off the AC power before installing.
- > Assembling the EM backup with the safety Rope with the chain link connector.
- > Please use waterproof connectors in position AC input wire interface and Dimming wire interface for application in wet location.

#### STEP2: INSTALLING

- > Install the 2pcs ring M10 Hanging Ring Bolt to the EM backup and fix it with screw.
- > Install the UFO high bay to the Hanging Ring Bolt of EM backup and tighten the screws.

#### STEP3: WIRING

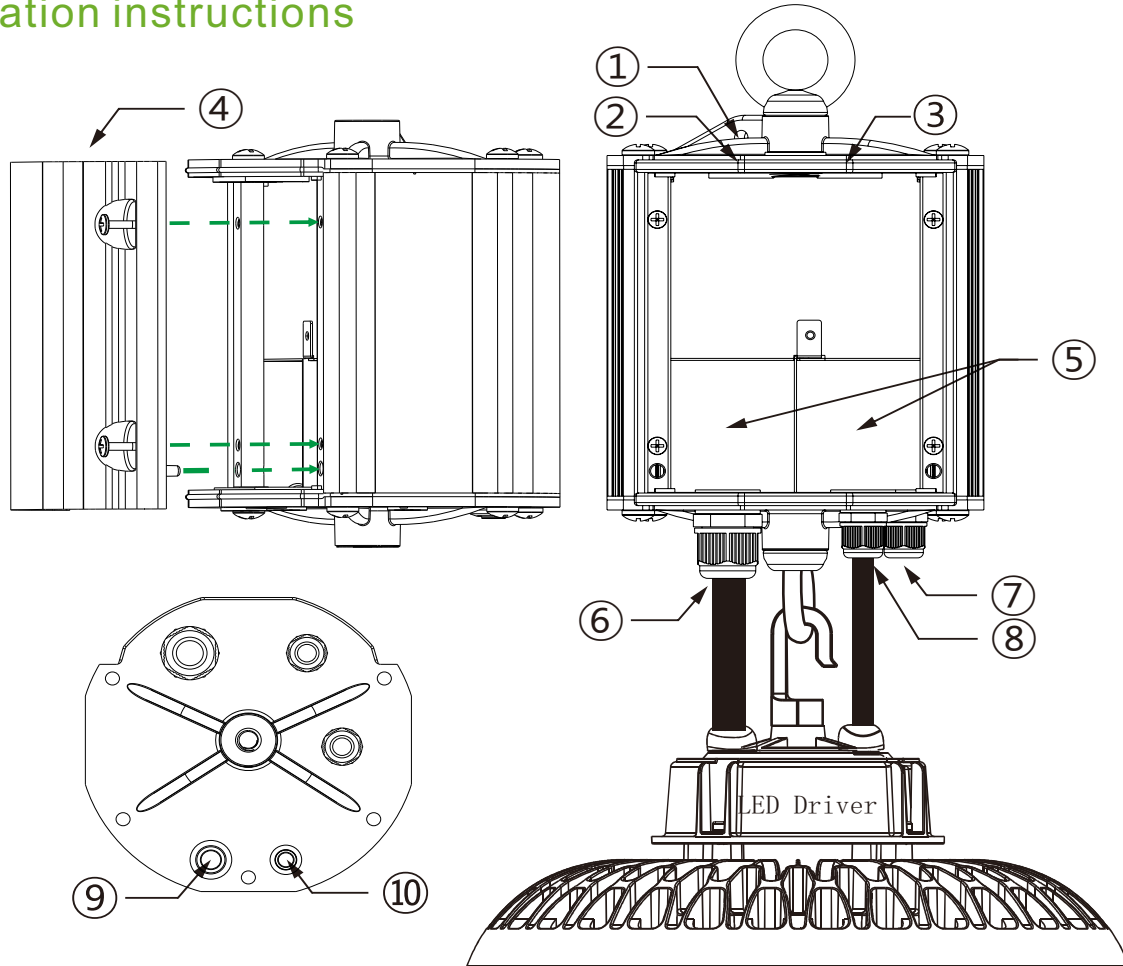
- > Before wiring, make sure safety rope is securely locked and make sure all the screws are tight.
- > Open the cover of junction box.
- > The voltage input to the dimmable wires (DIM+, DIM-) of emergency LED driver must less than 20Vdc.
- > Using wire nuts to cover un-used wires and make sure all connections are in accordance with the NEC and any local regulations.

#### STEP 4: TESTING

- > After wiring is complete, apply A.C. power. Check if the indicator light lights or not, which will indicate the battery's charging situation.
- > The battery in this unit may not be fully charged. A short-term discharge test may be conducted after the driver has been charging for 1 hour. Charge for 24 hours before conducting a long-term discharge test.

**SAVE THESE INSTRUCTIONS**

## Installation instructions



① Safety rope interface	⑥ LED Driver input wire
② AC input wire interface	⑦ Sensor wire interface
③ Dimming wire interface	⑧ LED Driver dimming wire
④ Integrated junction box cover	⑨ Charge Indicator & Test switch
⑤ Junction box	⑩ Signal receiver

## Accessories



- 1pc Suitable for wire diameter 0.118-0.248" (3-6.3mm)( Optional)
- 1pc Suitable for wire diameter 0.196-0.393" (5-10mm)( Optional)



2pcs M10 Hanging ring Bolt



11 pcs of wire nuts

## Wiring Diagram

**Note:** The LED fixture must be integrated with 0-10V driver, when LED fixture power is more than Emergency backup unit power.

