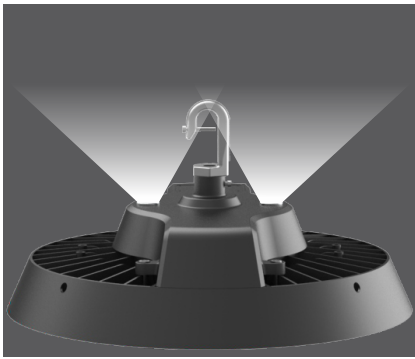


## EHB series smart highbay



On-Demand Lighting  
First Plug & Play Smart LED HighBay



## Product Description

World's first patented designed module type plug & play sensor and sensor embedded luminaire. User can easily scale from an ordinary fixture to a smart fixture in 3 seconds. Wide, Medium, Narrow optics and Dome lens options offer versatility Snap-on design, lens can be replaced quickly and easily.

## Features

- Different applications, different choices
- Field installable Uplight kit, Eliminate dark ceilings and corners
- Surge prevention optional
- First patented design with plug & play smart LED

## Sensor pluggable



Sensor embedded luminaire



3 seconds easily plug-in



Smart LED HighBay

## Accessory Options

Motion Sensor



Daylight Sensor



PC Reflector



Aluminum Reflector



Cable with plug



Steel chain



Cable Connector



3/4"NPT Converter



### Compared with the traditional high bay



Item	Traditional high bay	Module type plug & play design
Labor cost	Many require re-circuiting or new control wiring. Need professional operation, wasting lots of labor costs	Easy plug-in scalability, any user can easily scale from a standard fixture to a smart light fixture in 3 seconds
Upgrade cost	Even if smart lighting is not needed now. upgrades and replacements are very expensive when needed later.	
Inventory cost	Need to store intelligent control products specifically, increasing inventory costs	3 seconds easy plug-in scalability, only need to stock standard products
Shipping cost	Intelligent control is customized, purchased according to project requirements, and has high shipping costs.	Module type plug & play sensor and sensor embedded luminaire, Can be stocked up in advance and reduce shipping costs by sea
Time costs	Customized according to customer needs, delivery time is long, and business will be missed	Pre-stocking meet fast demand. Easy plug-in installation, save installation time
Safety	Wiring is messy and exposed. Hidden security risks	Luminaire-integrated design reduces complexity, 12V DC safe power supply

### Specifications

On-Demand Lighting-World's First Plug&Play Smart LED High Bay Light							
Model Number		E2-EHB50	E2-EHB75	E2-EHB100	E2-EHB120	E2-EHB145	E2-EHB180
Input Wattage		50W	75W	100W	120W	145W	180W
Standard	Efficiency(+/-5%)	165-180lm/W					
	Delivered Lumens (+/-5%)	8500lm	12750lm	17000lm	20400lm	24650lm	30500lm
Economic	Efficiency(+/-5%)	135-150lm/W					
	Delivered Lumens (+-5%)	7200lm	10800lm	14500lm	17000lm	21000lm	25200lm
Input Voltage		100-240VAC/120-277VAC/249-528VAC, 50/60Hz					
CRI		73+ (80+ optional)					
CCT		5000K( 3000K, 4000K available)					
Beam Angle		60°90°120°, Aisle optic 50*100°, Dome Lens 60°90°120Custom optical					
Power Factor		>0.95					
IP Rating		IP65					
Working Temp		-40-122°F(-40-50C)					
Warranty		5 Years standard( can be extended to 10 Years)					
Certifications		ETL,CETL.DLC Premium,FCC,SAA,CE,ROHS,NSF					
Control Options		DALI, ZigBee, Bluetooth, Daylight Sensor, Motion Sensor, 1-10V Dimming					

### Ordering Guide

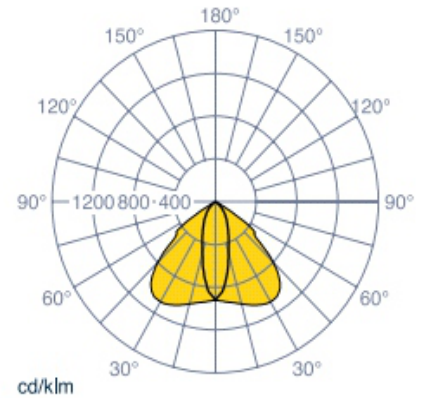
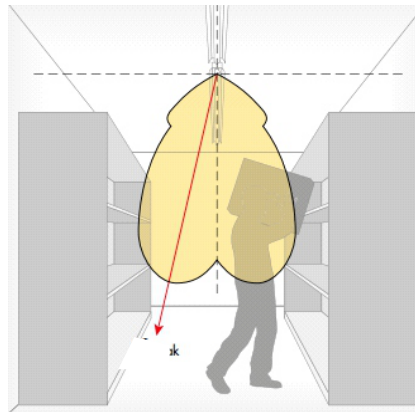
Family	Watts	Beam Angle	CCT	Finish	Voltage	Mount	Options
E2-EHB							
E2-EHB=Easy Smart High Bay Light	75=75W 100=100W 120=120W 145=145W 180=180W	60D=60° 90D=90° 120D=120° 5010D=50*100° DM=Dome lens CO=Custom optical	30=3000K 40=4000K 50=5000K	BK=Black, std SV=Silver WH=White CC=Custom Color	(OMIT)= Universal 120-277V, std HV=249-528VAC	(OMIT)=Hook(1/2"NPT), std BT=Bracket SR=Steel Rope NC=3/4" NPT Converter	(OMIT)=None, std MS=Motion Sensor DS=Daylight Sensor ZG=Zigbee Control DM=1-10V Dimming DA=Dali Control UP=Up light

## Applications

Placing light where needed

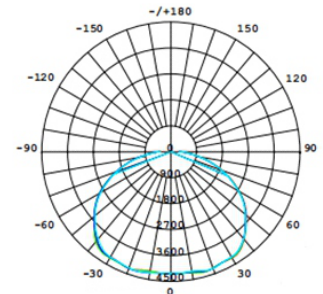
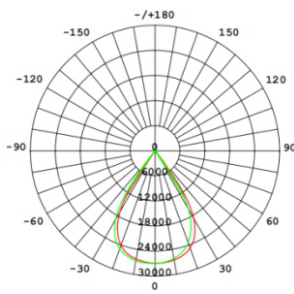
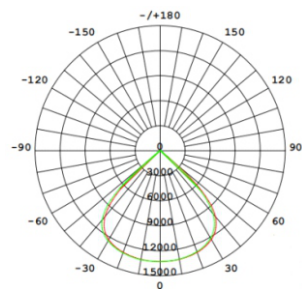
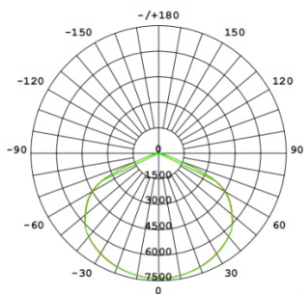
### Aisle optic

Suitable for storage spaces, warehouses or retail with narrow spaces between the racks.



Wide, Medium, Narrow Optics and Dome Lens options offer versatility

**Snap-on design**, lens can be replaced quickly and easily



Different applications, different choices



High Bay with PC lens



High Bay with aluminum reflector

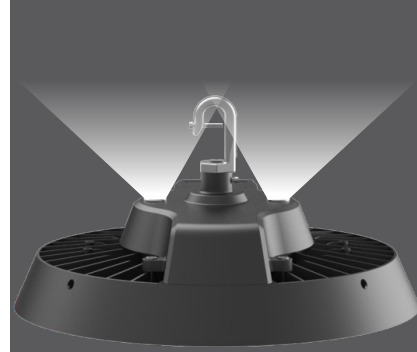


High Bay with prismatic reflector and drop lens

## Field installable Uplight Kit

Eliminates dark ceilings and corners

10KV 20KV  
Surge Prevention optional



ZHAGA receptacle available for external controls provided by others



## Various Mounting Options for easy installation



Hook Mount



Adjustable Bracket



Steel Rope  
Pendant mount



Indirect Mount



NPT Pipe Mount



Pole Mount as  
Post Top Light